

150 YEARS OF TEXTILE EXCELLENCE

[WORKWEAR]

FABRICS

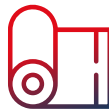


150 YEARS OF TEXTILE EXCELLENCE

GROUP FACTS & FIGURES



Market leader
in the European workwear market



The group overall produces more than
50 millions metres of fabric annually



The group counts
over 600 employees



Fabrics sold and distributed
in more than 70 countries



Pionier in sustainability



KLOPMAN INTERNATIONAL



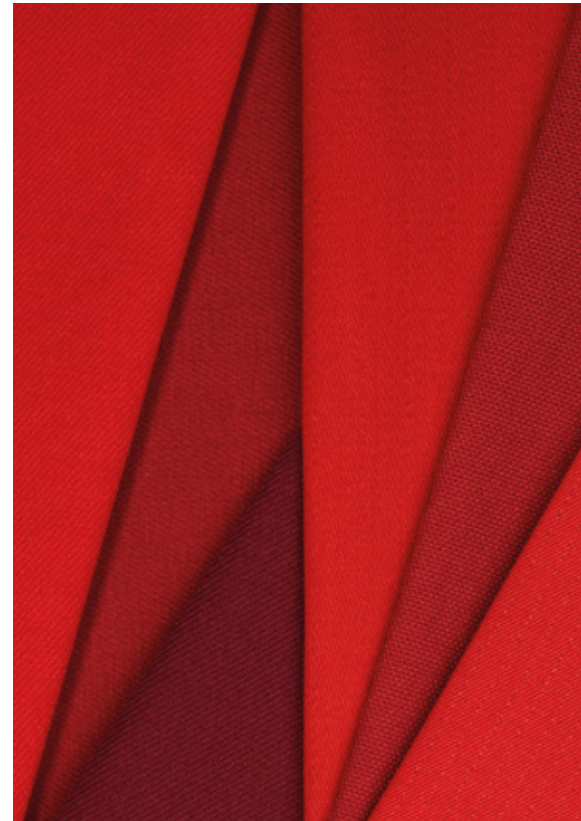
Klopmann International has been a European leader in the production of technical fabrics for workwear for over 55 years, with three business areas dedicated to the different fields of application: Workwear, Protectivewear and Corporatewear.

The company was the first to introduce the use of polyester/cotton blend, gaining a third of the European market in some sectors and now producing fabrics in over 170 styles and different colour shades.

Klopmann has its headquarters and production site in Frosinone, Italy, with a plant covering 70,000 square metres.

The company has commercial branch offices in Dusseldorf, Lyon, Borås (Sweden), Moscow, Dubai and Bangkok, plus a production site in Jakarta to serve the Asian market directly.

Klopmann has always focused its attention on providing the highest customer service experience, top - quality products with an emphasis on innovation, product responsibility and sustainability.



TDV INDUSTRIES



TDV Industries is a France-based company specialising in the production of high-quality technical fabrics. Founded in 1864, TDV Industries is recognised for its expertise in developing innovative and performance fabric, including those customised for clients' needs.

The company is seen as a pioneer in sustainability for its early commitment to international frameworks such as the United Nations Global Compact, and for its commitment to developing fabrics with improved environmental performance and the most positive possible social and societal impact.

As well as solid experience in fabric production for the workwear sector, TDV is highly regarded in the military sector and in security, police and fire services. The company supplies camouflage fabrics, as well as fabrics for uniforms and personal protective equipment. All fabrics meets the most stringent requirements through the use of advanced technologies and high-quality materials.





[POLYESTER/COTTON]

	■ T-LITE 135 135gr - Crease resist finish 67% PES / 33% Co Plain		■ VELYS 240gr - Crease resist finish 67% PES / 33% Co 2x1 S Twill
	■ T-LITE 145 145gr - Soft finish 67% PES / 33% Co Plain		■ HIGHLANDS 240gr - Crease resist finish 67% PES / 33% Co 3x1 Z Twill
	◆ CONCEPT 150gr - Crease resist soft finish 65% PES / 35% Co Plain OPTION RECYCLED PES		◆ INDESTRUCTIBLE 245gr - Crease resist finish 65% PES / 35% Co 2x1 Z Twill OPTION RECYCLED PES
	◆ UTOPIA 170gr - Crease resist finish 65% PES / 35% Co Plain		◆ MILAN 245gr - Crease resist finish 65% PES / 35% Co 2x1 S Twill
	◆ SPOTLIGHT 175gr - Crease resist finish 65% PES / 35% Co 2x1 Z Twill		◆ CURACAO 270gr - Crease resist finish 65% PES / 35% Co 2x2 S Twill
	◆ BANDMASTER 195gr - Crease resist finish 65% PES / 35% Co 2x1 S Twill		◆ ASHFORD 290gr - Crease resist soft finish 65% PES / 35% Co Canvas
	◆ BARI 210gr - Crease resist finish 65% PES / 35% Co 2x1 S Twill		◆ DYNAMITE 300gr - Crease resist finish 65% PES / 35% Co 3x1 Z Twill OPTION RECYCLED PES
	◆ SUPERBANDMASTER 210gr - Crease resist finish 65% PES 35% Co 2x1 Z Twill OPTION RECYCLED PES		



Scan the QR code to check all available on-line colours for each fabric style



Our sustainable solutions



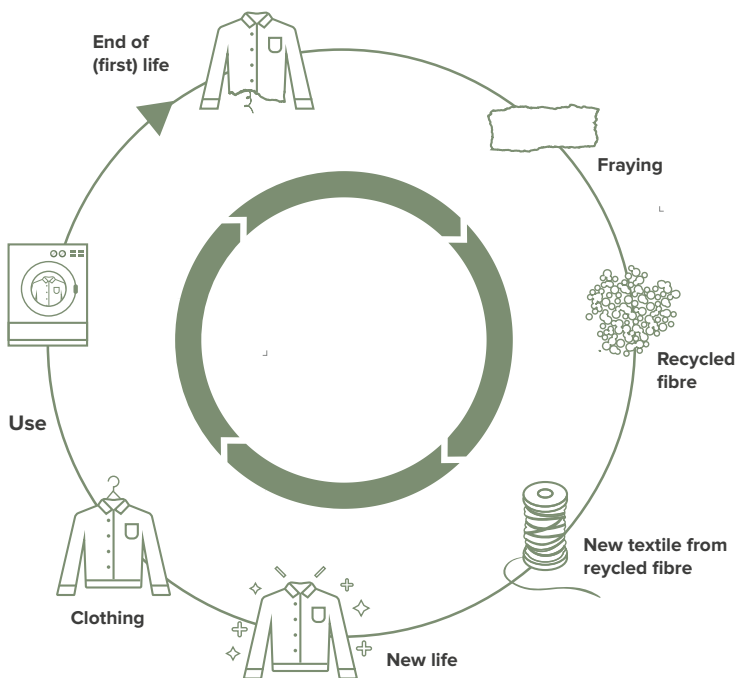
◆ **SBM R-PES BIO**
210gr - Crease resist OC1
65% R-PES / 35% Organic Cotton
2x1 Z Twill



◆ **INDESTRUCTIBLE R-PES BIO**
245gr - Crease resist OC1
65% R-PES / 35% Organic Cotton
2x1 Z Twill



Circular Fabrics



We offer the market fully integrated circular economy fabrics that will lead to a revolution in the workwear sector and beyond.

The project starts with **collecting clothes and fabrics at the end of their first lifecycle and recycling them to generate new fibres.**

These fibres will be used to create new fabrics and therefore new garments.

Find out more about the Klopman/TDV Industries concept by scanning the QR code below:





[COTTON RICH]

■ T-LITE 125

125gr - Crease resist finish
50% Co / 50% PES
Plain

◆ CHARLOTTE

180gr - Crease resist finish
50% Co / 50% PES
2x1 Z Twill
OPTION RECYCLED PES

■ RAIDER

180gr - Crease resist finish
60% Co / 40% PES
2x1 S Twill

◆ PRIMA

185gr - Crease resist finish
60% Co / 40% PES
Plain

◆ TRAPPER

185gr - Crease resist finish
60% Co / 40% PES
Plain

◆ CHARLENE

195gr - Crease resist finish
60% Co / 40% PES
Satin 5

◆ BRAVO

200gr - Crease resist finish
60% Co / 40% PES
2x1 Z Twill

◆ DIVA

200gr - Crease resist finish
60% Co / 40% PES
Satin 5

◆ CROSSOVER

215gr - Crease resist finish
50% Co / 50% PES
2x1 Z Twill

◆ VIENNA-W

215gr - Crease resist finish
50% Co / 50% PES
2x1 Z Twill

■ S250

250gr - Crease resist finish
65% Co / 35% PES
2x1 S Twill
OPTION RECYCLED PES

◆ NEW ARENA

250gr - Crease resist soft finish
60% Co / 40% PES
3x1 Z Twill

◆ SCALA

275gr - Crease resist finish
60% Co / 40% PES
Satin 5/2

■ TREKKING

280gr - Crease resist finish
65% Co / 35% PES
Panama

■ ALPHA

300gr - Crease resist finish
65% Co / 35% PES
2X2 S Twill

■ FASHION

300gr - Crease resist finish
65% Co / 35% PES
2X2 S Twill

■ S300

300gr - Crease resist finish
65% Co / 35% PES
2x1 S Twill

■ SUPERMAINE

300gr - Crease resist finish
65% Co / 35% PES
2x2 S Twill

◆ HAMBURG

305gr - Crease resist soft finish
65% Co / 35% PES
2x2 S Twill

◆ CHALLENGER

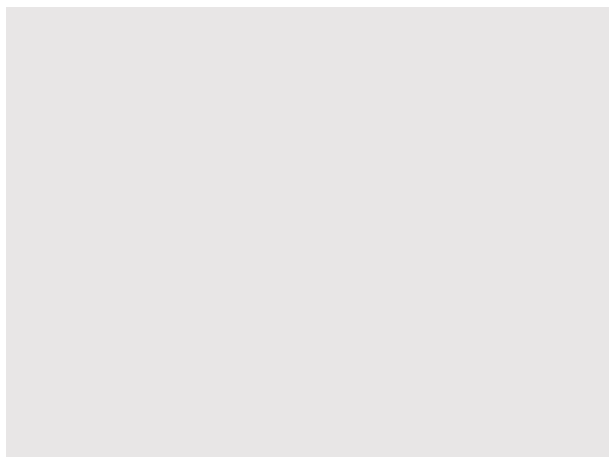
315gr - Crease resist soft finish
60% Co / 40% PES
2x2 S Twill

◆ WINCHESTER

325gr - Crease resist soft finish
60% Co / 40% PES
Canvas



Our sustainable solutions



◆ **CHARLOTTE R-PES BIO**
180gr - Crease resist OC1
50% Organic Cotton / 50% R-PES
2x1 Z Twill



■ **S-250 PREMIUM FT**
250gr - Crease resist finish
65% Organic Cotton Fairtrade / 35% R-PES
2x1 S Twill



■ **SUPERMAINE PREMIUM FT**
300gr - Crease resist finish
65% Organic Cotton Fairtrade / 35% R-PES
2x2 S Twill

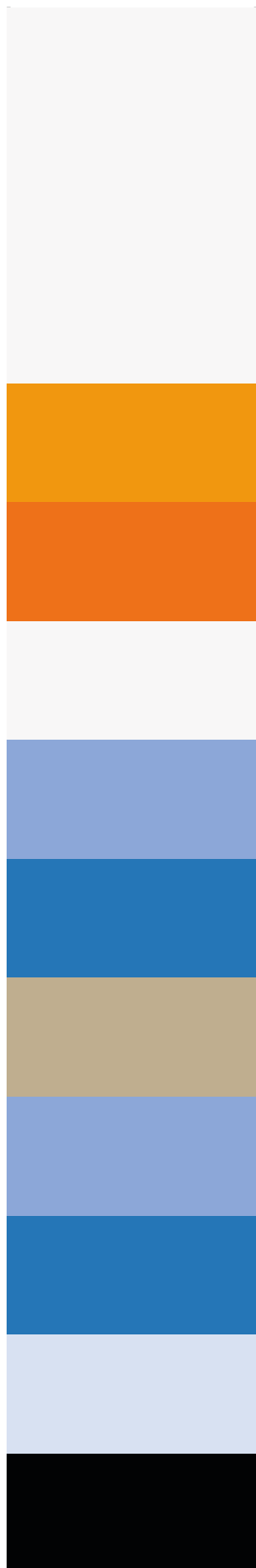


■ **SUPERMAINE R-PES**
300gr - Crease resist finish
65% Co / 35% R-PES
2x2 S Twill






[100% COTTON]



■ **C180** available in BIO CE 
180gr - Soft finish
100% Cotton
Plain

■ **PERROS** available in BIO CE 
210gr - Soft finish
100% Cotton
3x1 S Twill

◆ **COTTONTEC 210**
210gr - Regular finish
100% Cotton
2x1 S Twill

■ **LAZA**
250gr - Soft finish
100% Cotton
S Twill

■ **VT1**
260gr - Soft finish
100% Cotton
3x1 S Twill

◆ **COTTONTEC 295**
295gr - Regular finish
100% Cotton
3x1 S Twill

■ **TRIBERG**
300gr - Soft finish
100% Cotton
3x1 S Twill

■ **KEMPEN**
340gr - Soft finish
100% Cotton
2x2 Z Twill

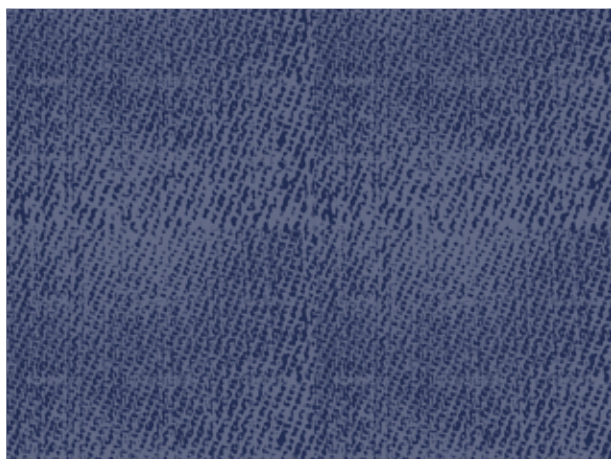
■ **M54**
370gr - Soft finish
100% Cotton
Moleskin

■ **M60**
400gr - Soft finish
100% Cotton
Moleskin

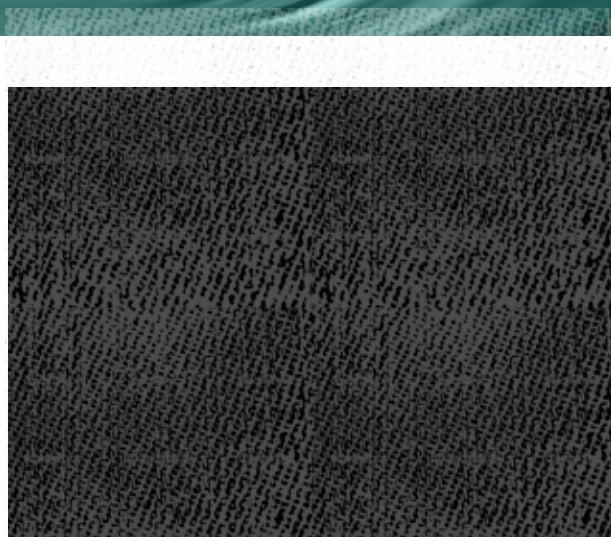
■ **M450**
450gr - Soft finish
100% Cotton
Moleskin



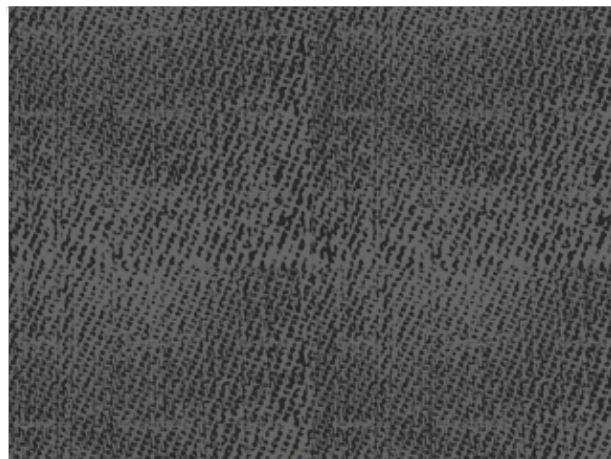
[DENIM STRETCH]



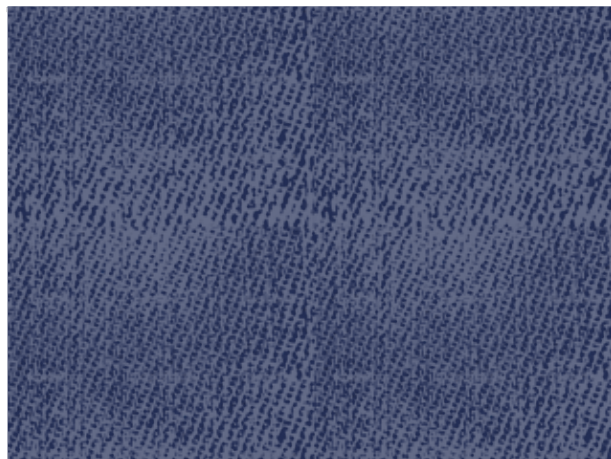
◆ **INDIGOSTAR 180**
180gr - Crease resist finish
65% PES / 35% Co - 2x1 Z Twill



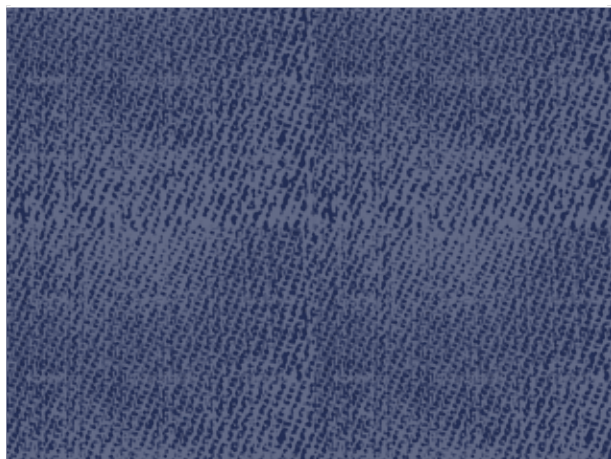
◆ **INDIGOSTAR 215**
215gr - Crease resist finish
65% PES / 35% Co - 2x1 Z Twill



◆ **INDIGOSTAR 250**
250gr - Crease resist finish
65% PES / 35% Co - 3x1 Z Twill



◆ **INDIGOSTAR 275**
275gr - Crease resist finish
65% PES / 35% Co - 3x1 Z Twill



◆ **K-FLEX INDIGO 220**
220gr - Crease resist OC1
57% PES / 40% Co / 3% EOL(XLANCE®) - 3x1 Z Twill

	<p>◆ STARMASTER 200gr - Crease resist finish 60% Co / 40% Pes 2x1 Z Twill</p>		<p>◆ SHOWSTAR 250gr - Crease resist finish 65% PES / 35% Co 2x1 Z Twill</p>	S T A R L I N E
	<p>◆ STARLIGHT 205gr - Crease resist finish 65% PES / 35% Co 2x1 Z Twill</p>		<p>◆ BLUESTAR BT 290gr - Crease resist finish 65% PES / 35% Co Broken Twill</p>	
	<p>◆ STARFIELD 235gr - Crease resist finish 65% PES / 35% Co Panama IRR</p>		<p>◆ STARMAKER R-PES  290gr - Crease resist OC1 65% R-PES / 35% FT Co 3x1 Z Twill</p>	
     	<p>■ T-LITE FLEX 125 125gr - Crease resist finish 48,5% PES / 46,5% Co / 5% EOL (XLANCE®) - Plain</p>		<p>◆ K-FLEX 245 PANAMA 245gr - Crease resist OC1 62% PES / 33% Co / 5% EOL (XLANCE®) - Canvas</p>	F L E X
	<p>◆ K-FLEX 150 150gr - Crease resist OC1 48,5% PES / 46,5% Co / 5% EOL (XLANCE®) - 2x1 S Twill</p>		<p>◆ K-FLEX 245 245gr - Crease resist OC1 62,5% PES / 33,5% Co / 4% EOL (XLANCE®) - 2x1 S Twill OPTION RECYCLED PES</p>	
	<p>◆ K-FLEX 200 200gr - Crease resist OC1 49% PES / 49% Co / 2% EOL (XLANCE®) - 2x1 S Twill</p>		<p>■ XMAINE 260 260gr - Crease resist finish 70% PES / 27% Co / 3% EOL (XLANCE®) - Satin 4</p>	
	<p>◆ K-FLEX 215 215gr - Crease resist OC1 65% PES / 32% Co / 3% EOL (XLANCE®) - 2x1 S Twill OPTION RECYCLED PES</p>		<p>■ XMAINE 270 CP 270gr - Crease resist finish 63% CO / 34% PES / 3% EOL (XLANCE®) - 3x1 S Twill</p>	
	<p>◆ K-FLEX 220 220gr - Crease resist OC1 48,5% PES / 48,5% Co / 3% EOL (XLANCE®) - 2x1 S Twill</p>		<p>◆ TWIFLEX 275 275gr - Crease resist OC1 47% PES / 47% Co / 6% EOL (XLANCE®) - 2x1 S Twill</p>	
	<p>■ XMAINE 240 PANAMA 245gr - Crease resist finish 63% PES / 34% Co / 3% EOL (XLANCE®) - Panama</p>		<p>■ XMAINE 285 PC 285gr - Crease resist finish 63% PES / 34% Co / 3% EOL (XLANCE®) - 3x1 S Twill</p>	
	<p>■ XMAINE 240 PC 240gr - Crease resist finish 63% PES / 34% Co / 3% EOL (XLANCE®) - 2x1 S Twill</p>		<p>◆ K-FLEX 285 285gr - Crease resist OC1 64% PES / 33% Co / 3% EOL (XLANCE®) - 3x1 S Twill</p>	
			<p>◆ K-FLEX 285 PANAMA 285gr - Crease resist OC1 54% PES / 43% Co / 3% EOL (XLANCE®) - Canvas</p>	



Our sustainable/stretch solutions



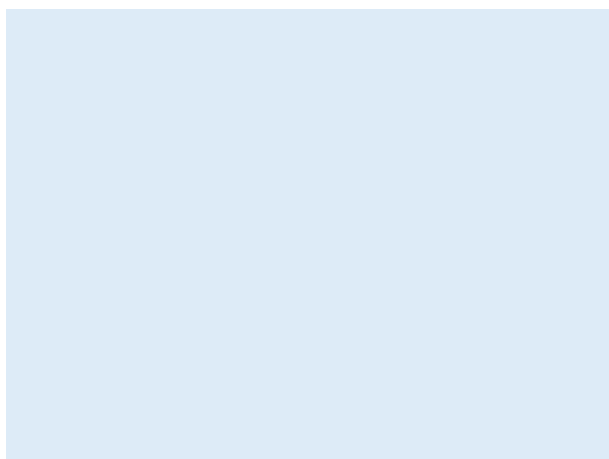
◆ K-FLEX 180 R-PES

180gr - Crease Resist OC1 - 42% R-PES
/ 38,5%Co / 16%PES / 3,5% EOL (XLANCE®) - 2x1 S Twill



◆ SHOWSTAR R-PES

255gr - Crease Resist OC1
65% R-PES / 35% Co - 2x1 Z Twill



■ CCPEL 215

215gr - Soft finish - 50% Co / 48% PES / 2% EA
2x2 Z Twill



■ CCPEL 250 BIO

250gr - Hydrofoil finish - 50 % Organic Cotton / 48% PES
/ 2% EA - 2x2 Z Twill



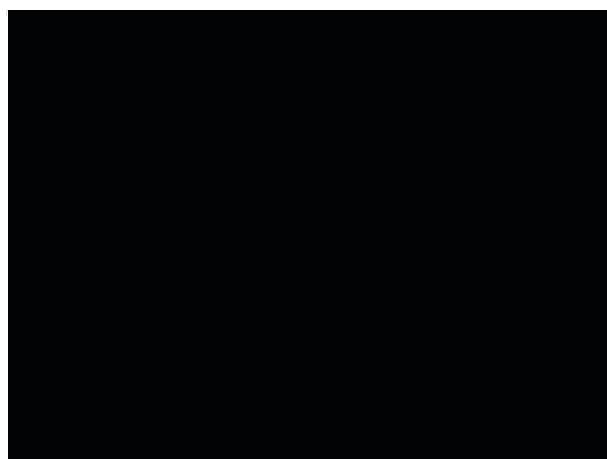
◆ ESCALADE R-PES BCI

292gr - Regular finish
46% Better Co / 38% EME / 16% R-PES - 3x1 Z Twill



C
O
O
L

S
T
R
E
T
C
H

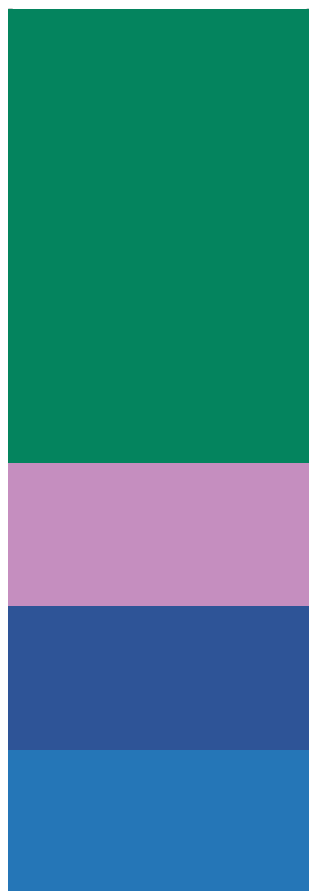


◆ LAGONDA

205gr - Regular finish
40% Co / 30 % EME / 30% PES - 2x1 Z Twill



[TENCEL™ LYOCCELL]



◆ **SEAFORD**
155gr - Crease resist OC1
50% PES / 50% Lyocell
(TENCEL™) - Plain



◆ **OXFORD**
195gr - Crease resist OC1
50% PES / 50% Lyocell
(TENCEL™) - 2x1 S Twill
OPTION RECYCLED PES



◆ **HELFORD**
215gr - Crease resist OC1
50% PES / 50% Lyocell
(TENCEL™) - 2x1 S Twill
OPTION RECYCLED PES



◆ **CHALFORD**
215gr - Crease resist OC1
65% PES / 35% Lyocell
(TENCEL™) - 2x1 S Twill



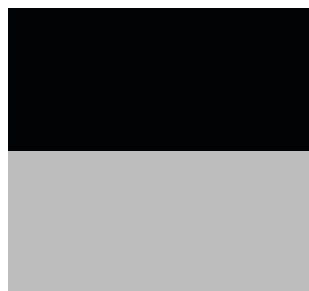
◆ **NOBLEFORD**
225gr - Crease resist OC1
50% PES / 50% Lyocell
(TENCEL™) - 3x1 S Twill



◆ **BRADFORD**
250gr - Crease resist OC1
50% PES / 50% Lyocell
(TENCEL™) - 2x1 S Twill



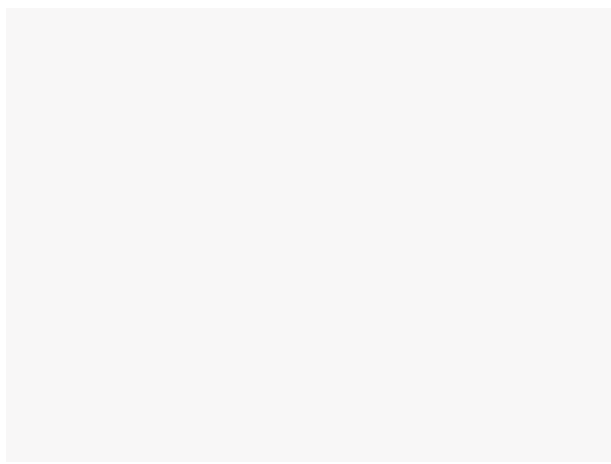
◆ **ROCKFORD**
270gr - Crease resist OC1
50% PES / 50% Lyocell
(TENCEL™) - 3x1 Broken Twill



ALL THE TENCEL™ FIBRES USED IN
OUR RANGE ARE CARBON NEUTRAL.



TENCEL™ Lyocell

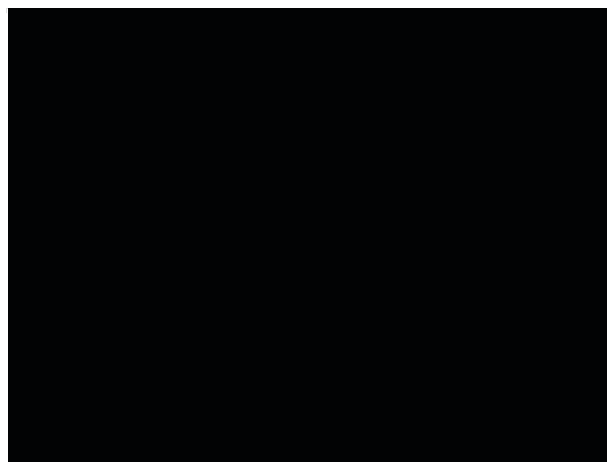


◆ VITALYS 195

195gr - Crease resist OC1
50% R-PES / 50% Lyocell (TENCEL™)
2x1 S Twill



X



◆ VITALYS 235

235gr - Crease resist OC1
50% R-PES / 50% Lyocell (TENCEL™)
2x1 S Twill



TENCEL™ Lyocell



◆ CHARLFORD FLEX

215gr - Crease resist OC1
65% PES / 32% Lyocell (TENCEL™) / 3% EOL(XLANCE®)
2x1 S Twill



■ XMAINE 280 RPL

280gr - Crease resist finish
65% R-PES / 32% Lyocell (TENCEL™) / 3%EOL(XLANCE®)
3x1 S Twill



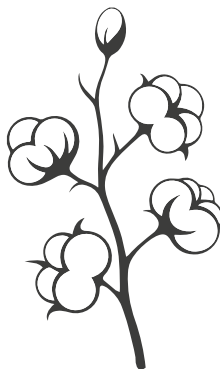
POLYESTER/COTTON

Polycotton blended fabrics are the most commonly used in the workwear sector worldwide. A great fit for their purpose, together with optimum resistance to wear, makes Klopman - TDV Industries fabrics the perfect choice to combine performance, comfort, and durability. A wide range of fabrics suitable for both domestic and high-temperature industrial washing.

COTTON RICH

Fabrics with a higher cotton content provide enhanced comfort as well as exceptional absorbency and breathability. This, combined with the resistance of polyester, has led to widespread use: from healthcare to hospitality industries, as well as image applications requiring softer styling and drape.

These fabrics ensure very good shrinkage performance and excellent tear and abrasion resistance even after repeated industrial laundering.



100% COTTON

Klopman-TDV 100% cotton fabrics provide the wearer with maximum comfort. Breathable, absorbent of moisture, durable and naturally soft, these fabrics offer excellent comfort to the wearer in hot weather conditions. Also available with GOTS certification.

COLOUR CONSISTENCY



All Klopman-TDV fabrics meet the highest standards in terms of colour performance to make sure all the fabrics can maintain their original colour and minimal staining when the design features other fabric colours, fibres or when exposed to external factors.

For this reason, the majority of our fabrics are certified ISO 20471 for contrasting colours.



POLYESTER FIBRE



High strength



Good crease recovery



Good dimensional stability



Good resistance to sunlight and UV durable



Hydrophobic (lack of ability to absorb water)



High electrical resistivity – static electricity builds up



Widely used for textile applications needing strong fibres



COTTON FIBRE



Hydrophilic, meaning it absorbs water easily and is more comfortable for the wearer



Warm and soft hand



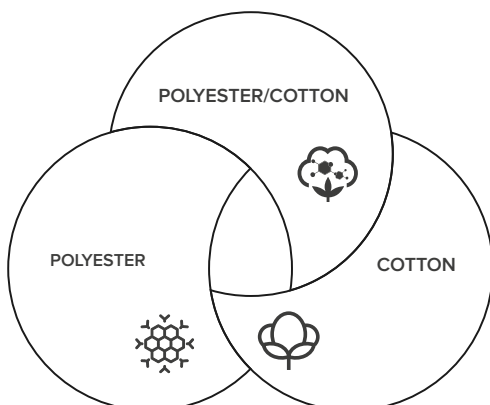
Not prone to static electricity (in a normal atmosphere)



Poor abrasion resistance and dimensional stability compared to polyester fibre



More inclined to crease compared to polyester fibre.



Polyester:
increases strength
and provides crease
resistance



Cotton:
improves moisture
absorption and
enhances softness



**Polyester
/Cotton:**
combines the
benefits of both




OUR SUSTAINABLE OPTIONS

Greenwear™ is our registered trademark. It summarises the concept of moving forward to a greener consciousness when wearing a garment. We offer the market different solutions even in combination.



Fabrics made with Recycled Polyester



Klopman proudly offers the market fabrics formed using **high-quality recycled yarns made from recycled materials** including **recycled plastic bottles**. This means making sustainable use of thousands of tonnes of waste plastic bottles which might otherwise end up in landfill.

Klopman fabrics made with recycled polyester ensure maximum transparency and traceability of the whole supply chain.

This solution makes products more earth-friendly; in comparison with virgin polyester, recycled polyester reduces energy and water consumption and greenhouse gas emissions.




CHART ILLUSTRATING THE REPREEVE® MANUFACTURING PROCESS REPREEVE® Unifi, Inc.

Better Cotton

Better Cotton is a not-for-profit organisation that exists to help cotton communities thrive and survive, while protecting the environment.



Organic Cotton

Buying organic cotton means purchasing natural fibres which haven't been subjected to the use of fertilisers, insecticides or pesticides. The benefits are significant: from enhancing biodiversity to taking care of the final wearer with a safer, more sustainable solution. We use traceable international standards for organic cotton sourcing.

TDV Industries: EGL/62719/869939/1



Fairtrade Cotton

Buying products made with Fairtrade-certified cotton guarantees the empowerment of cotton farmers through better prices, while the payment of the Fairtrade premium also contributes to protecting people and the environment through the prohibition of genetically modified seeds.

TDV Industries: FLO ID 3517

Klopman: FLO ID 19786



Ecolabel

The EU Ecolabel is the official European Union voluntary label for environmental excellence. The EU Ecolabel certifies products with a guaranteed and independently verified low environmental impact, which is why "labelled" services must meet high environmental standards throughout their entire life cycle: from raw material extraction through production and distribution to disposal.



TENCEL™

Our fabrics made with TENCEL™ Lyocell fibres are derived from sustainably grown wood and produced in an environmentally responsible, closed-loop production process, which transforms wood pulp into cellulosic fibres with high resource efficiency and low ecological impact.



**ALL THE TENCEL™ FIBRES USED IN OUR RANGE
ARE CARBON NEUTRAL.**



We have also developed fabrics made of TENCEL™ Lyocell with REFIBRA™ technology. The pioneering REFIBRA™ technology involves upcycling cotton scraps from garment production, then transforming them into cotton pulp. A substantial proportion – up to one third – of this is added to wood pulp.



OEKO-TEX®

OEKO-TEX® is a registered trademark, representing the product labels and company certifications. The OEKO-TEX® Association issues two important product-related labels, **OEKO-TEX® STANDARD 100** and **OEKO-TEX® MADE IN GREEN** and facility label **OEKO-TEX® STEP**.

OEKO-TEX® Standard 100

is a worldwide independent testing and certification system for textile products guaranteeing that product has been tested for harmful substances.



**STANDARD
100**

ALL OUR ONLINE PRODUCTS ARE OEKO-TEX® STANDARD 100 CERTIFIED.

KL: 21.HIT.91104, 21.HIT.78937, 16.HIT.89108, 93.0.4408, 06.0.45545, 04.0.4929

TDV INDUSTRIES: CQ601-2, CQ601-3, CQ601-4

OEKO-TEX® STeP

STeP stands for Sustainable Textile Production and is a worldwide certification system for environmentally friendly and socially responsible production facilities in the textile industry.

The primary goal of **OEKO-TEX® STEP certification** standard is to help production facilities to measure and improve sustainability, environmental performance, social responsibility, health, and safety performance and to report this to industry and consumers in a transparent and useful format.

TDV Industries : 22003041

Klopman: 16000007



STeP

Made in Green

OEKO-TEX® MADE IN GREEN is a label for textile products that are sustainably produced and have been tested for harmful substances according to the **OEKO-TEX® STANDARD 100** the criteria and is produced by companies that have been audited and **OEKO-TEX® STEP**.



**MADE IN
GREEN**

Ask our sales representative to know more

OUR COMMITMENT TO QUALITY AND SUSTAINABILITY

<p>OUR GROUP PROUDLY SUPPORTS THE UN GLOBAL COMPACT</p>	<p>WE SUPPORT</p> 
<p>Both Klopman and TDV committed to the Global Compact corporate responsibility initiative.</p> <p>This commitment reflects the Group’s strong belief in sustainable and ensuring fair labour practices ethical business practices.</p> <p>By supporting the Global Compact, the Group demonstrates its dedication to promoting human rights, ensuring fair labour practices, protecting the environment, and maintaining high standards of integrity and transparency in all its operations.</p>	

<p>EPV - ENTREPRISE DU PATRIMOINE VIVANT</p>	
<p>The EPV label is an official award in France recognized to premium artisanal and industrial companies.</p> <p>TDV Industries has been awarded with the EPV label in 2022 for its values of excellence, innovation, and heritage preservation. This recognition acknowledges its ongoing commitment to quality, its contribution to the technical textiles industry, and its significant role as a key player in local and national economic development.</p>	

STRETCH

The Klopman-TDV stretch fabric range redefines fabric comfort, offering greater freedom of movement and total ease of wear. The superior stretch and recover qualities also mean that garments flex and respond to movement without placing strain on their construction and maintain their original shape and appearance even after repeated wash & wear cycles.

Flex line



The Flex line is a range of fabrics that blends the XLANCE® fibre elasticity with the tenacity of polyester and the breathability of cotton. Suitable for industrial laundering, it is characterised by long-lasting elasticity that guarantees an extended life cycle for all garments made from it and therefore a smaller environmental footprint.

The XLANCE® fiber, a sustainable alternative to traditional spandex-like TPU, offers exceptional performance while prioritizing eco-friendliness. Its inherent durability guarantees the Flex line enduring and unparalleled comfort.

Cool Stretch



Escalade and Lagonda stretch fabrics are certified for LYCRA® TOUGH MAX™ technology as well as COOLMAX® CORE technology.

They contain the LYCRA® T400® fiber produced by The LYCRA Company. The profile of this fibre has special channels which pull moisture away from the skin to the outer layer of the fabric – where it quickly evaporates. As a result, the wearer feels cooler and more comfortable.

LYCRA® and COOLMAX® are registered trademarks of The LYCRA Company.

Bi-stretch



Bi-stretch fabrics can be stretched in all directions and have been specifically conceived to give extra comfort and freedom of movement to the wearer. Twiflex, with a high cotton content and 6% XLANCE fibre in its composition, merges comfort, industrial launderability and breathability.

Mechanical stretch



Mechanical stretch fabrics are produced using our special weaving technology that gives them a 'natural' stretch without the need for any added fibres to enhance their performance. The elasticity of the fabric makes the garments feel extremely comfortable, even in physically demanding work environments.

Denim stretch

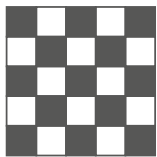
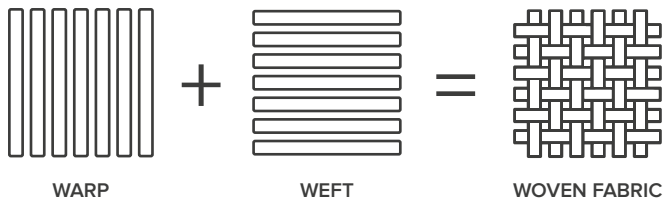
Our denim stretch collection is a range of poly-cotton mechanical stretch fabrics with a denim look, designed to offer the wearer superb comfort and freedom of movement. Our comfortable and stylish denim fabrics offer a choice of intense colours, excellent performance even after repeated washing, and are well known for their long-lasting performance.

THE WEAVING PROCESS

A fabric is a manufactured product created by the intertwining of yarns perpendicular to each other.

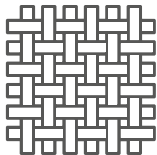
It consists of two elements: the warp yarn and the weft yarn.

The operation consists of intertwining **warp yarns** (lengthways) and **weft yarns** (widthways) following a well-defined frequency called **weaving**.



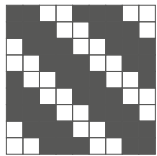
PLAIN WEAVE

The simplest weave, with the same appearance on both sides.



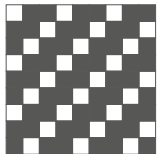
CANVAS

Canvas is a plain-weave, heavy-duty fabric. Featuring thick yarn, canvas is tightly woven in a simple plain-weave



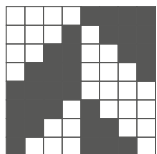
S TWILL WEAVE

When the twill runs from the lower right to the upper left corner, the twill is known as a left-hand twill. S indicates the direction of the twill.



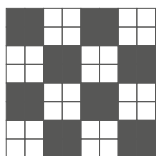
Z TWILL WEAVE

When the diagonal line runs from the lower left corner to the upper right corner. The alignment of twill line is parallel to the middle portion of 'Z', hence Z twill.



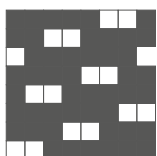
BROKEN TWILL

The broken twill is a combination of twill weave. It has the combination of right-hand twill and left-hand.



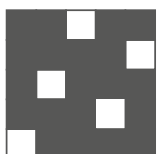
PANAMA WEAVE

Smooth, with the same appearance on both sides.



MOLESKIN

Moleskin is a weave based on the satin weave. The result is a tightly woven cotton fabric which gives it a special shine in daylight. This construction makes it a perfect fabric for workwear.



SATIN WEAVE

SATIN 5 is a weave that makes the fabric smooth with a soft hand and has long tramlines with an obvious warp effect on the front side and weft effect on the reverse side



Klopman International



www.klopman.com

TDV Industries



www.tdvindustries.com